

Tricom[®]

▶ **TriCOM XL / L**

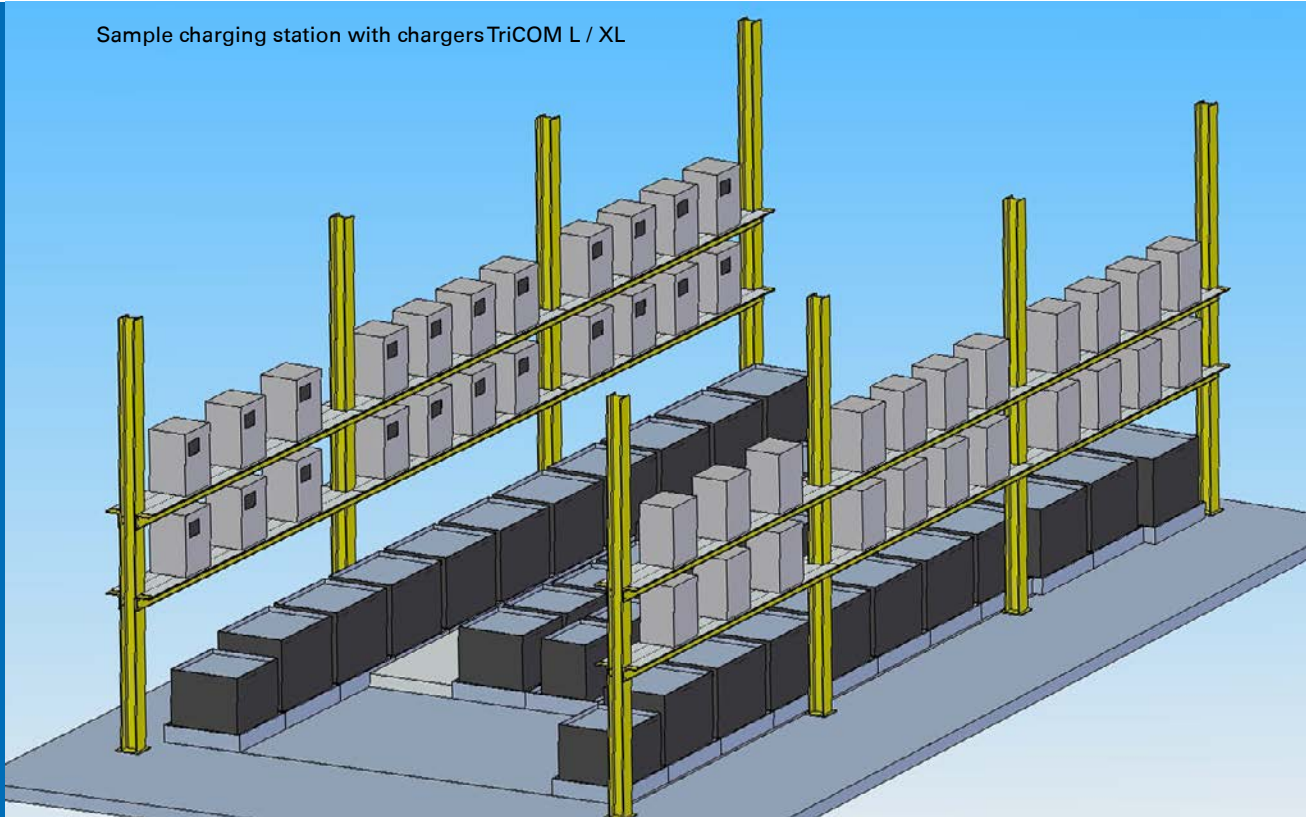


Energy. Endurance. Performance.



TriCOM[®] L and TriCOM[®] XL - the new generation

Sample charging station with chargers TriCOM L / XL



Innovative charging technology

The new TriCOM L - XL chargers are controlled and monitored by a state-of-the-art electronic charge system. The charging profile of the TriCOM L - XL chargers was specifically optimized for traction batteries which are used in industrial trucks in order to achieve a long service life of the batteries, reduce energy and watering costs.

All operating data as well as the last 1,200 charges can be read out via a USB interface. The comprehensive charging data with time and date and the integrated statistical analysis allow a detailed analysis of the charging history. An extensive error memory allows the optimization of the charging process.

Graphic display

The new modern graphic display shows all current values at a glance. The current battery voltage, charge current, charged ampere hours and charge time are all shown. The graphic display also shows the current charge level in a % as well as all fault messages and warnings in plain text detail.

The state of the connected battery is visible at a glance. In order to see the operating state of the charger from a distance, extremely bright high-performance LEDs have been utilized in TriCOM L - XL chargers.

The optional »IONIC Mixing« profile reduces the power consumption by up to 10% and significantly extends the watering intervals of the traction battery due to low water consumption.

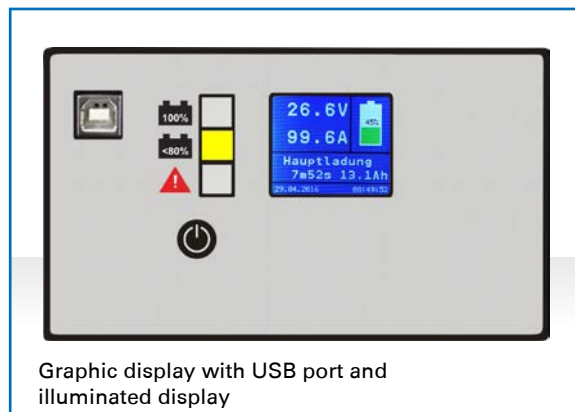
TriCOM[®] L and TriCOM[®] XL

SYSTEM FEATURES

- ▶ **Robust and innovative technology** - fully automatic, microprocessor-controlled charging, adjustable operating parameters, integrated timer with date and time function.
- ▶ **Energy saving** - high efficiency of the transformers, intelligent charge profiles.
- ▶ **High-resolution graphic display** - precise information of all relevant charging and maintenance data.
- ▶ **USB port** - storage of the last 1,200 charges, optimum analysis possibility for the vehicle fleet, exact error checking in the event of a fault, read-out and programming option.
- ▶ **New and stable cabinet design** - easy door opening, attractive design, easy to service.
- ▶ **Integrated wall bracket** - flexible wall mounting is possible.
- ▶ **Gentle charging** - recharging controlled by charge factor.
- ▶ **IONIC Mixing** - reduction of the charge time by up to 2 hours, up to 10% energy savings and extension of the overall battery life.
- ▶ **LED displays** - quick visual detection of the charging status.
- ▶ **Options:** IONIC Mixing, electrolyte circulation, automatic water refilling, remote diagnosis, networking via radio, battery management system "next Battery Guard"
- ▶ **Intelligent software** - for optimal adjustment of the charge parameters to varying operating conditions.



Example: Charger type TriCOM XL in the housing type TSE 700



Graphic display with USB port and illuminated display

Nr.	Nr. abs.	Datum	Uhrzeit	Status
104	190	5.09.2015	20:54	OK
105	192	6.09.2015	13:50	---FEHLER---
106	192	6.09.2015	19:09	OK
107	194	7.09.2015	13:05	---FEHLER---
108	195	7.09.2015	20:07	OK
109	196	8.09.2015	10:53	OK
109	197	8.09.2015	17:46	OK
121	190	9.09.2015	20:05	OK
132	199	11.09.2015	7:50	---FEHLER---
133	200	11.09.2015	10:20	---FEHLER---
134	201	11.09.2015	20:37	OK
195	202	12.09.2015	13:54	---FEHLER---
196	203	12.09.2015	19:08	OK
197	204	13.09.2015	19:07	OK

Statistics module

TriCOM[®] L table of types

Device type TriCOM L	Charging times depending on capacity C _e in Ah			Technical data						
	PzS			Housing	Mains voltage	Mains connection	Mains fuse	Mains current	Mains plug	Weight
	8.5 - 10 h	10 - 12 h	12 - 14 h							
E 24 / 10	55 - 67	67 - 77	77 - 95	TSE 175	230 V	0.6 kVA	16 A	1.4 A	Schuko	10 kg
E 24 / 15	82 - 100	100 - 115	115 - 143	TSE 175	230 V	0.6 kVA	16 A	2.1 A	Schuko	10 kg
E 24 / 20	110 - 134	134 - 154	154 - 190	TSE 175	230 V	0.8 kVA	16 A	2.8 A	Schuko	11 kg
E 24 / 25	138 - 168	168 - 193	193 - 308	TSE 175	230 V	1.0 kVA	16 A	3.5 A	Schuko	15 kg
E 24 / 30	165 - 201	201 - 231	231 - 285	TSE 175	230 V	1.2 kVA	16 A	4.2 A	Schuko	16 kg
E 24 / 40	220 - 268	268 - 308	308 - 380	TSE 210	230 V	1.6 kVA	16 A	5.6 A	Schuko	19 kg
E 24 / 50	275 - 335	335 - 385	385 - 475	TSE 210	230 V	2.0 kVA	16 A	7.0 A	Schuko	20 kg
E 24 / 60	330 - 402	402 - 462	462 - 570	TSE 210	230 V	2.3 kVA	16 A	8.3 A	Schuko	21 kg
E 24 / 70	385 - 469	469 - 539	539 - 665	TSE 460	230 V	2.6 kVA	16 A	9.7 A	Schuko	45 kg
E 24 / 80	440 - 536	536 - 616	616 - 760	TSE 460	230 V	3.0 kVA	16 A	11.1 A	Schuko	45 kg
E 24 / 90	495 - 603	603 - 693	693 - 855	TSE 460	230 V	3.0 kVA	16 A	12.5 A	Schuko	47 kg
E 24 / 100	550 - 670	670 - 770	770 - 950	TSE 460	230 V	3.5 kVA	16 A	13.9 A	Schuko	50 kg
D 24 / 100	550 - 670	670 - 770	770 - 950	TSE 460	400 V	3.5 kVA	16 A	4.6 A	CEE 16	60 kg
D 24 / 110	605 - 738	738 - 847	847 - 1045	TSE 460	400 V	3.8 kVA	16 A	5.1 A	CEE 16	60 kg
D 24 / 120	660 - 804	804 - 924	924 - 1140	TSE 460	400 V	4.0 kVA	16 A	5.5 A	CEE 16	60 kg
D 24 / 130	715 - 872	872 - 1001	1001 - 1236	TSE 700	400 V	4.1 kVA	16 A	6.0 A	CEE 16	63 kg
D 24 / 140	770 - 938	938 - 1078	1078 - 1330	TSE 700	400 V	4.3 kVA	16 A	6.5 A	CEE 16	65 kg
D 24 / 150	925 - 1005	1005 - 1155	1155 - 1425	TSE 700	400 V	4.5 kVA	16 A	6.9 A	CEE 16	68 kg
D 24 / 160	880 - 1072	1072 - 1232	1232 - 1520	TSE 700	400 V	4.6 kVA	16 A	7.4 A	CEE 16	70 kg
D 24 / 170	935 - 1139	1139 - 1309	1309 - 1615	TSE 700	400 V	4.8 kVA	16 A	7.9 A	CEE 16	73 kg
D 24 / 180	990 - 1206	1206 - 1386	1386 - 1710	TSE 700	400 V	5.0 kVA	16 A	8.3 A	CEE 16	75 kg
D 24 / 190	1045 - 1275	1275 - 1463	1463 - 1806	TSE 700	400 V	5.0 kVA	16 A	8.8 A	CEE 16	75 kg
D 24 / 200	1100 - 1340	1340 - 1540	1540 - 1900	TSE 700	400 V	5.5 kVA	16 A	9.2 A	CEE 16	80 kg
E 36 / 15	82 - 100	100 - 115	115 - 143	TSE 210	230 V	0.9 kVA	16 A	3.1 A	Schuko	15 kg
E 36 / 20	110 - 134	134 - 154	154 - 190	TSE 210	230 V	1.2 kVA	16 A	4.2 A	Schuko	16 kg
E 36 / 25	138 - 168	168 - 193	193 - 308	TSE 210	230 V	1.5 kVA	16 A	5.2 A	Schuko	17 kg
E 36 / 30	165 - 201	201 - 231	231 - 285	TSE 210	230 V	1.8 kVA	16 A	6.3 A	Schuko	18 kg
E 36 / 40	220 - 268	268 - 308	308 - 380	TSE 210	230 V	2.2 kVA	16 A	8.3 A	Schuko	21 kg
E 36 / 50	275 - 335	335 - 385	385 - 475	TSE 460	230 V	2.6 kVA	16 A	10.4 A	Schuko	35 kg
E 36 / 60	330 - 402	402 - 462	462 - 570	TSE 460	230 V	3.0 kVA	16 A	12.5 A	Schuko	37 kg
E 36 / 70	385 - 469	469 - 539	539 - 665	TSE 460	230 V	4.0 kVA	16 A	14.6 A	Schuko	41 kg
Z 36 / 80	440 - 536	536 - 616	616 - 760	TSE 460	400 V	4.5 kVA	16 A	9.6 A	CEE 16	52 kg
D 36 / 80	440 - 536	536 - 616	616 - 760	TSE 460	400 V	4.5 kVA	16 A	5.5 A	CEE 16	52 kg
D 36 / 90	495 - 603	603 - 693	693 - 855	TSE 700	400 V	4.8 kVA	16 A	6.2 A	CEE 16	54 kg
D 36 / 100	550 - 670	670 - 770	770 - 950	TSE 700	400 V	6.0 kVA	16 A	6.9 A	CEE 16	65 kg
D 36 / 110	605 - 738	738 - 847	847 - 1045	TSE 700	400 V	6.0 kVA	16 A	7.6 A	CEE 16	65 kg
D 36 / 120	660 - 804	804 - 924	924 - 1140	TSE 700	400 V	6.0 kVA	16 A	8.3 A	CEE 16	66 kg
D 36 / 130	715 - 872	872 - 1001	1001 - 1236	TSE 700	400 V	6.2 kVA	16 A	9.0 A	CEE 16	67 kg
D 36 / 140	770 - 938	938 - 1078	1078 - 1330	TSE 700	400 V	6.5 kVA	16 A	9.7 A	CEE 16	68 kg
D 36 / 150	825 - 1005	1005 - 1155	1155 - 1425	TSE 700	400 V	6.8 kVA	16 A	10.4 A	CEE 16	70 kg
D 36 / 160	880 - 1072	1072 - 1232	1232 - 1520	TSE 700	400 V	7.2 kVA	16 A	11.1 A	CEE 16	75 kg
D 36 / 170	935 - 1139	1139 - 1309	1309 - 1615	TSE 700	400 V	7.6 kVA	16 A	11.8 A	CEE 16	80 kg
D 36 / 180	990 - 1206	1206 - 1386	1386 - 1710	TSE 700	400 V	8.0 kVA	16 A	12.5 A	CEE 16	85 kg
D 36 / 190	1045 - 1275	1275 - 1463	1463 - 1806	TSE 700	400 V	8.5 kVA	16 A	13.2 A	CEE 16	85 kg
D 36 / 200	1100 - 1340	1340 - 1540	1540 - 1900	TSE 700	400 V	9.0 kVA	16 A	13.9 A	CEE 16	90 kg

TriCOM[®] L table of types

Device type TriCOM L	Charging times depending on capacity C _p in Ah			Technical data						
	PzS			Housing	Mains voltage	Mains connection	Mains fuse	Mains current	Mains plug	Weight
	8.5 - 10 h	10- 12 h	12 - 14 h							
E 48 / 15	82 - 100	100 - 115	115 - 143	TSE 210	230 V	1.2 kVA	16 A	4.2 A	Schuko	22 kg
E 48 / 20	110 - 134	134 - 154	154 - 190	TSE 210	230 V	1.5 kVA	16 A	5.6 A	Schuko	25 kg
E 48 / 25	138 - 168	168 - 193	193 - 308	TSE 210	230 V	2.0 kVA	16 A	7.0 A	Schuko	27 kg
E 48 / 30	165 - 201	201 - 231	231 - 285	TSE 210	230 V	2.4 kVA	16 A	8.3 A	Schuko	29 kg
E 48 / 40	220 - 268	268 - 308	308 - 380	TSE 460	230 V	3.5 kVA	16 A	11.1 A	Schuko	42 kg
E 48 / 50	275 - 335	335 - 385	385 - 475	TSE 460	230 V	4.0 kVA	16 A	13.9 A	Schuko	45 kg
Z 48 / 60	330 - 402	402 - 462	462 - 570	TSE 460	400 V	4.5 kVA	16 A	9.6 A	CEE 16	65 kg
D 48 / 60	330 - 402	402 - 462	462 - 570	TSE 460	400 V	4.5 kVA	16 A	5.5 A	CEE 16	65 kg
D 48 / 70	385 - 469	469 - 539	539 - 665	TSE 700	400 V	4.8 kVA	16 A	6.5 A	CEE 16	70 kg
D 48 / 80	440 - 536	536 - 616	616 - 760	TSE 700	400 V	4.8 kVA	16 A	7.4 A	CEE 16	75 kg
D 48 / 90	495 - 603	603 - 693	693 - 855	TSE 700	400 V	5.0 kVA	16 A	8.3 A	CEE 16	82 kg
D 48 / 100	550 - 670	670 - 770	770 - 950	TSE 700	400 V	6.0 kVA	16 A	9.2 A	CEE 16	85 kg
D 48 / 110	605 - 738	738 - 847	847 - 1045	TSE 700	400 V	6.5 kVA	16 A	10.2 A	CEE 16	87 kg
D 48 / 120	660 - 804	804 - 924	924 - 1140	TSE 700	400 V	7.0 kVA	16 A	11.1 A	CEE 16	90 kg
D 48 / 130	715 - 872	872 - 1001	1001 - 1236	TSE 700	400 V	8.0 kVA	16 A	12.0 A	CEE 16	92 kg
D 48 / 140	770 - 938	938 - 1078	1078 - 1330	TSE 700	400 V	9.0 kVA	16 A	12.9 A	CEE 16	95 kg
D 48 / 150	825 - 1005	1005 - 1155	1155 - 1425	TSE 700	400 V	9.0 kVA	16 A	13.9 A	CEE 16	98 kg
D 48 / 160	880 - 1072	1072 - 1232	1232 - 1520	TSE 700	400 V	9.5 kVA	25 A	14.8 A	CEE 32	100 kg
D 48 / 170	935 - 1139	1139 - 1309	1309 - 1615	TSE 700	400 V	10.0 kVA	25 A	15.7 A	CEE 32	102 kg
D 48 / 180	990 - 1206	1206 - 1386	1386 - 1710	TSE 700	400 V	10.5 kVA	25 A	16.6 A	CEE 32	105 kg
D 48 / 190	1045 - 1275	1275 - 1463	1463 - 1806	TSE 700	400 V	11.0 kVA	25 A	17.6 A	CEE 32	110 kg
D 48 / 200	1100 - 1340	1340 - 1540	1540 - 1900	TSE 700	400 V	12.0 kVA	25 A	18.5 A	CEE 32	110 kg
E 80 / 15	82 - 100	100 - 115	115 - 143	TSE 210	230 V	1.5 kVA	16 A	7.0 A	Schuko	17 kg
E 80 / 20	110 - 134	134 - 154	154 - 190	TSE 460	230 V	2.0 kVA	16 A	9.3 A	Schuko	27 kg
E 80 / 25	138 - 168	168 - 193	193 - 308	TSE 460	230 V	2.5 kVA	16 A	11.6 A	Schuko	29 kg
Z 80 / 30	165 - 201	201 - 231	231 - 285	TSE 460	400 V	3.0 kVA	16 A	8.0 A	CEE 16	50 kg
D 80 / 30	165 - 201	201 - 231	231 - 285	TSE 700	400 V	3.0 kVA	16 A	4.6 A	CEE 16	50 kg
D 80 / 40	220 - 268	268 - 308	308 - 380	TSE 700	400 V	5.0 kVA	16 A	6.2 A	CEE 16	60 kg
D 80 / 50	275 - 335	335 - 385	385 - 475	TSE 700	400 V	6.0 kVA	16 A	7.7 A	CEE 16	70 kg
D 80 / 60	330 - 402	402 - 462	462 - 570	TSE 700	400 V	7.0 kVA	16 A	9.2 A	CEE 16	70 kg
D 80 / 70	385 - 469	469 - 539	539 - 665	TSE 700	400 V	8.0 kVA	16 A	10.8 A	CEE 16	80 kg
D 80 / 80	440 - 536	536 - 616	616 - 760	TSE 700	400 V	9.0 kVA	16 A	12.3 A	CEE 16	80 kg
D 80 / 90	495 - 603	603 - 693	693 - 855	TSE 700	400 V	10.0 kVA	16 A	13.9 A	CEE 16	90 kg
D 80 / 100	550 - 670	670 - 770	770 - 950	TSE 700	400 V	11.0 kVA	16 A	15.4 A	CEE 16	90 kg
D 80 / 110	605 - 738	738 - 847	847 - 1045	TSE 700	400 V	11.5 kVA	16 A	16.9 A	CEE 16	95 kg
D 80 / 120	660 - 804	804 - 924	924 - 1140	TSE 700	400 V	12.0 kVA	25 A	18.5 A	CEE 32	100 kg
D 80 / 130	715 - 872	872 - 1001	1001 - 1236	TSE 700	400 V	13.0 kVA	25 A	20.0 A	CEE 32	110 kg
D 80 / 140	770 - 938	938 - 1078	1078 - 1330	TSE 700	400 V	14.0 kVA	25 A	21.6 A	CEE 32	140 kg
D 80 / 150	825 - 1005	1005 - 1155	1155 - 1425	TSE 700	400 V	15.0 kVA	25 A	23.1 A	CEE 32	150 kg
D 80 / 160	880 - 1072	1072 - 1232	1232 - 1520	TSE 1000	400 V	16.0 kVA	32 A	24.6 A	CEE 32	160 kg
D 80 / 170	935 - 1139	1139 - 1309	1309 - 1615	TSE 1000	400 V	17.0 kVA	32 A	26.2 A	CEE 32	170 kg
D 80 / 180	990 - 1206	1206 - 1386	1386 - 1710	TSE 1000	400 V	18.0 kVA	32 A	27.7 A	CEE 32	180 kg
D 80 / 190	1045 - 1275	1275 - 1463	1463 - 1806	TSE 1000	400 V	19.0 kVA	32 A	29.3 A	CEE 32	200 kg
D 80 / 200	1100 - 1340	1340 - 1540	1540 - 1900	TSE 1000	400 V	20.0 kVA	32 A	30.8 A	CEE 32	200 kg

Housing type	Width	Height	Depth
TSE 175	300 mm	175 mm	210 mm
TSE 210	360 mm	210 mm	260 mm
TSE 460	515 mm	460 mm	385 mm
TSE 700	515 mm	700 mm	385 mm
TSE 1000	700 mm	1000 mm	500 mm

TriCOM[®] XL table of types

Device type TriCOM XL	Charging times depending on capacity C ₅ in Ah				Technical data						
	PzS				Housing	Mains voltage	Mains connection	Mains fuse	Mains current	Mains plug	Weight
	6.5 - 7.5 h*	7.5 - 8.5 h	8.5 - 12 h	12 - 14 h							
E 24 / 10	46 - 55	55 - 63	63 - 90	90 - 110	TSE 175	230 V	0.6 kVA	16 A	1.4 A	Schuko	10 kg
E 24 / 15	69 - 82	82 - 94	94 - 135	135 - 165	TSE 175	230 V	0.6 kVA	16 A	2.1 A	Schuko	10 kg
E 24 / 20	92 - 110	110 - 126	126 - 180	180 - 220	TSE 175	230 V	0.8 kVA	16 A	2.8 A	Schuko	11 kg
E 24 / 25	115 - 137	137 - 157	157 - 225	225 - 275	TSE 175	230 V	1.0 kVA	16 A	3.5 A	Schuko	15 kg
E 24 / 30	139 - 165	165 - 189	189 - 270	270 - 330	TSE 175	230 V	1.2 kVA	16 A	4.2	Schuko	16 kg
E 24 / 40	185 - 220	220 - 252	252 - 360	360 - 440	TSE 210	230 V	1.6 kVA	16 A	5.6 A	Schuko	19 kg
E 24 / 50	231 - 275	275 - 315	315 - 450	450 - 550	TSE 210	230 V	2.0 kVA	16 A	7.0 A	Schuko	20 kg
E 24 / 60	277 - 330	330 - 378	378 - 540	540 - 660	TSE 210	230 V	2.3 kVA	16 A	8.3 A	Schuko	21 kg
E 24 / 70	323 - 385	385 - 441	441 - 630	630 - 770	TSE 460	230 V	2.6 kVA	16 A	9.7 A	Schuko	45 kg
E 24 / 80	370 - 440	440 - 504	504 - 720	720 - 880	TSE 460	230 V	3.0 kVA	16 A	11.1 A	Schuko	45 kg
E 24 / 90	416 - 495	495 - 567	567 - 810	810 - 990	TSE 460	230 V	3.0 kVA	16 A	12.5 A	Schuko	47 kg
E 24 / 100	462 - 550	550 - 630	630 - 900	900 - 1100	TSE 460	230 V	3.5 kVA	16 A	13.9 A	Schuko	50 kg
D 24 / 100	462 - 550	550 - 630	630 - 900	900 - 1100	TSE 460	400 V	3.5 kVA	16 A	4.6 A	CEE 16	60 kg
D 24 / 110	508 - 605	605 - 693	693 - 990	990 - 1210	TSE 460	400 V	3.8 kVA	16 A	5.1 A	CEE 16	60 kg
D 24 / 120	554 - 660	660 - 756	756 - 1080	1080 - 1320	TSE 460	400 V	4.0 kVA	16 A	5.5 A	CEE 16	60 kg
D 24 / 130	600 - 715	715 - 819	819 - 1170	1170 - 1430	TSE 700	400 V	4.1 kVA	16 A	6.0 A	CEE 16	63 kg
D 24 / 140	646 - 770	770 - 882	882 - 1260	1260 - 1540	TSE 700	400 V	4.3 kVA	16 A	6.5 A	CEE 16	65 kg
D 24 / 150	693 - 825	825 - 945	945 - 1350	1350 - 1650	TSE 700	400 V	4.5 kVA	16 A	6.9 A	CEE 16	68 kg
D 24 / 160	740 - 880	880 - 1008	1008 - 1420	1420 - 1760	TSE 700	400 V	4.6 kVA	16 A	7.4 A	CEE 16	70 kg
D 24 / 170	785 - 935	935 - 1071	1071 - 1530	1530 - 1870	TSE 700	400 V	4.8 kVA	16 A	7.9 A	CEE 16	73 kg
D 24 / 180	832 - 990	990 - 1134	1134 - 1620	1620 - 1980	TSE 700	400 V	5.0 kVA	16 A	8.3 A	CEE 16	75 kg
D 24 / 190	873 - 1045	1045 - 1197	1197 - 1710	1710 - 2090	TSE 700	400 V	5.0 kVA	16 A	8.8 A	CEE 16	75 kg
D 24 / 200	924 - 1100	1100 - 1260	1260 - 1800	1800 - 2200	TSE 700	400 V	5.5 kVA	16 A	9.2 A	CEE 16	80 kg
E 36 / 15	69 - 82	82 - 94	94 - 135	135 - 165	TSE 210	230 V	0.9 kVA	16 A	3.1 A	Schuko	15 kg
E 36 / 20	92 - 110	110 - 126	126 - 180	180 - 220	TSE 210	230 V	1.2 kVA	16 A	4.2 A	Schuko	16 kg
E 36 / 25	115 - 137	137 - 157	157 - 225	225 - 275	TSE 210	230 V	1.5 kVA	16 A	5.2 A	Schuko	17 kg
E 36 / 30	139 - 165	165 - 189	189 - 270	270 - 330	TSE 210	230 V	1.8 kVA	16 A	6.3 A	Schuko	18 kg
E 36 / 40	185 - 220	220 - 252	252 - 360	360 - 440	TSE 210	230 V	2.2 kVA	16 A	8.3 A	Schuko	21 kg
E 36 / 50	231 - 275	275 - 315	315 - 450	450 - 550	TSE 460	230 V	2.6 kVA	16 A	10.4 A	Schuko	35 kg
E 36 / 60	277 - 330	330 - 378	378 - 540	540 - 660	TSE 460	230 V	3.0 kVA	16 A	12.5 A	Schuko	37 kg
E 36 / 70	323 - 385	385 - 441	441 - 630	630 - 770	TSE 460	230 V	4.0 kVA	16 A	14.6 A	Schuko	41 kg
Z 36 / 80	370 - 440	440 - 504	504 - 720	720 - 880	TSE 460	400 V	4.5 kVA	16 A	9.6 A	CEE 16	52 kg
D 36 / 80	370 - 440	440 - 504	504 - 720	720 - 880	TSE 460	400 V	4.5 kVA	16 A	5.5 A	CEE 16	52 kg
D 36 / 90	416 - 495	495 - 567	567 - 810	810 - 990	TSE 700	400 V	4.8 kVA	16 A	6.2 A	CEE 16	54 kg
D 36 / 100	462 - 550	550 - 630	630 - 900	900 - 1000	TSE 700	400 V	6.0 kVA	16 A	6.9 A	CEE 16	65 kg
D 36 / 110	508 - 605	605 - 693	693 - 990	990 - 1210	TSE 700	400 V	6.0 kVA	16 A	7.6 A	CEE 16	65 kg
D 36 / 120	554 - 660	660 - 756	756 - 1080	1080 - 1320	TSE 700	400 V	6.0 kVA	16 A	8.3 A	CEE 16	66 kg
D 36 / 130	600 - 715	715 - 819	819 - 1170	1170 - 1430	TSE 700	400 V	6.2 kVA	16 A	9.0 A	CEE 16	67 kg
D 36 / 140	646 - 770	770 - 882	882 - 1260	1260 - 1540	TSE 700	400 V	6.5 kVA	16 A	9.7 A	CEE 16	68 kg
D 36 / 150	693 - 825	825 - 945	945 - 1350	1350 - 1650	TSE 700	400 V	6.8 kVA	16 A	10.4 A	CEE 16	70 kg
D 36 / 160	740 - 880	880 - 1008	1008 - 1420	1420 - 1760	TSE 700	400 V	7.2 kVA	16 A	11.1 A	CEE 16	75 kg
D 36 / 170	785 - 935	935 - 1071	1071 - 1530	1530 - 1870	TSE 700	400 V	7.6 kVA	16 A	11.8 A	CEE 16	80 kg
D 36 / 180	832 - 990	990 - 1134	1134 - 1620	1620 - 1980	TSE 700	400 V	8.0 kVA	16 A	12.5 A	CEE 16	85 kg
D 36 / 190	873 - 1045	1045 - 1197	1197 - 1710	1710 - 2090	TSE 700	400 V	8.5 kVA	16 A	13.2 A	CEE 16	85 kg
D 36 / 200	924 - 1100	1100 - 1260	1260 - 1800	1800 - 2200	TSE 700	400 V	9.0 kVA	16 A	13.9 A	CEE 16	90 kg

*ONLY with option IONIC MIXING

TriCOM[®] XL table of types

Device type TriCOM XL	Charging times depending on capacity C _p in Ah				Technical data						
	PzS				Housing	Mains voltage	Mains-connection	Mains fuse	Mains-current	Mains plug	Weight
	6.5 - 7.5 h*	7.5 - 8.5 h	8.5 - 12 h	12 - 14 h							
E 48 / 15	69 - 82	82 - 94	94 - 135	135 - 165	TSE 210	230 V	1.2 kVA	16 A	4.2 A	Schuko	22 kg
E 48 / 20	92 - 110	110 - 126	126 - 180	180 - 220	TSE 210	230 V	1.5 kVA	16 A	5.6 A	Schuko	25 kg
E 48 / 25	115 - 137	137 - 157	157 - 225	225 - 275	TSE 210	230 V	2.0 kVA	16 A	7.0 A	Schuko	27 kg
E 48 / 30	139 - 165	165 - 189	189 - 270	270 - 330	TSE 210	230 V	2.4 kVA	16 A	8.3 A	Schuko	29 kg
E 48 / 40	185 - 220	220 - 252	252 - 360	360 - 440	TSE 460	230 V	3.5 kVA	16 A	11.1 A	Schuko	42 kg
E 48 / 50	231 - 275	275 - 315	315 - 450	450 - 550	TSE 460	230 V	4.0 kVA	16 A	13.9 A	Schuko	45 KG
Z 48 / 60	277 - 330	330 - 378	378 - 540	540 - 660	TSE 460	400 V	4.5 kVA	16 A	9.6 A	CEE 16	65 kg
D 48 / 60	277 - 330	330 - 378	378 - 540	540 - 660	TSE 460	400 V	4.5 kVA	16 A	5.5 A	CEE 16	65 kg
D 48 / 70	323 - 385	385 - 441	441 - 630	630 - 770	TSE 700	400 V	4.8 kVA	16 A	6.5 A	CEE 16	70 kg
D 48 / 80	370 - 440	440 - 504	504 - 720	720 - 880	TSE 700	400 V	4.8 kVA	16 A	7.4 A	CEE 16	75 kg
D 48 / 90	416 - 495	495 - 567	567 - 810	810 - 990	TSE 700	400 V	5.0 kVA	16 A	8.3 A	CEE 16	82 kg
D 48 / 100	462 - 550	550 - 630	630 - 900	900 - 1000	TSE 700	400 V	6.0 kVA	16 A	9.2 A	CEE 16	85 kg
D 48 / 110	508 - 605	605 - 693	693 - 990	990 - 1210	TSE 700	400 V	6.5 kVA	16 A	10.2 A	CEE 16	87 kg
D 48 / 120	554 - 660	660 - 756	756 - 1080	1080 - 1320	TSE 700	400 V	7.0 kVA	16 A	11.1 A	CEE 16	90 kg
D 48 / 130	600 - 715	715 - 819	819 - 1170	1170 - 1430	TSE 700	400 V	8.0 kVA	16 A	12.0 A	CEE 16	92 kg
D 48 / 140	646 - 770	770 - 882	882 - 1260	1260 - 1540	TSE 700	400 V	9.0 kVA	16 A	12.9 A	CEE 16	95 kg
D 48 / 150	693 - 825	825 - 945	945 - 1350	1350 - 1650	TSE 700	400 V	9.0 kVA	16 A	13.9 A	CEE 16	98 kg
D 48 / 160	740 - 880	880 - 1008	1008 - 1420	1420 - 1760	TSE 700	400 V	9.5 kVA	25 A	14.8 A	CEE 32	100 kg
D 48 / 170	785 - 935	935 - 1071	1071 - 1530	1530 - 1870	TSE 700	400 V	10.0 kVA	25 A	15.7 A	CEE 32	102 kg
D 48 / 180	832 - 990	990 - 1134	1134 - 1620	1620 - 1980	TSE 700	400 V	10.5 kVA	25 A	16.6 A	CEE 32	105 kg
D 48 / 190	873 - 1045	1045 - 1197	1197 - 1710	1710 - 2090	TSE 700	400 V	11.0 kVA	25 A	17.6 A	CEE 32	110 kg
D 48 / 200	924 - 1100	1100 - 1260	1260 - 1800	1800 - 2200	TSE 700	400 V	12.0 kVA	25 A	18.5 A	CEE 32	110 kg
E 80 / 15	69 - 82	82 - 94	94 - 135	135 - 165	TSE 210	230 V	1.5 kVA	16 A	7.0 A	Schuko	17 kg
E 80 / 20	92 - 110	110 - 126	126 - 180	180 - 220	TSE 460	230 V	2.0 kVA	16 A	9.3 A	Schuko	27 kg
E 80 / 25	115 - 137	137 - 157	157 - 225	225 - 275	TSE 460	230 V	2.5 kVA	16 A	11.6 A	Schuko	29 kg
Z 80 / 30	139 - 165	165 - 189	189 - 270	270 - 330	TSE 460	400 V	3.0 kVA	16 A	8.0 A	CEE 16	50 kg
D 80 / 30	139 - 165	165 - 189	189 - 270	270 - 330	TSE 700	400 V	3.0 kVA	16 A	4.6 A	CEE 16	50 kg
D 80 / 40	185 - 220	220 - 252	252 - 360	360 - 440	TSE 700	400 V	5.0 kVA	16 A	6.2 A	CEE 16	60 kg
D 80 / 50	231 - 275	275 - 315	315 - 450	450 - 550	TSE 700	400 V	6.0 kVA	16 A	7.7 A	CEE 16	70 kg
D 80 / 60	277 - 330	330 - 378	378 - 540	540 - 660	TSE 700	400 V	7.0 kVA	16 A	9.2 A	CEE 16	70 kg
D 80 / 70	323 - 385	385 - 441	441 - 630	630 - 770	TSE 700	400 V	8.0 kVA	16 A	10.8 A	CEE 16	80 kg
D 80 / 80	370 - 440	440 - 504	504 - 720	720 - 880	TSE 700	400 V	9.0 kVA	16 A	12.3 A	CEE 16	80 kg
D 80 / 90	416 - 495	495 - 567	567 - 810	810 - 990	TSE 700	400 V	10.0 kVA	16 A	13.9 A	CEE 16	90 kg
D 80 / 100	462 - 550	550 - 630	630 - 900	900 - 1000	TSE 700	400 V	11.0 kVA	16 A	15.4 A	CEE 16	90 kg
D 80 / 110	508 - 605	605 - 693	693 - 990	990 - 1210	TSE 700	400 V	11.5 kVA	16 A	16.9 A	CEE 16	95 kg
D 80 / 120	554 - 660	660 - 756	756 - 1080	1080 - 1320	TSE 700	400 V	12.0 kVA	25 A	18.5 A	CEE 32	100 kg
D 80 / 130	600 - 715	715 - 819	819 - 1170	1170 - 1430	TSE 700	400 V	13.0 kVA	25 A	20.0 A	CEE 32	110 kg
D 80 / 140	646 - 770	770 - 882	882 - 1260	1260 - 1540	TSE 700	400 V	14.0 kVA	25 A	21.6 A	CEE 32	140 kg
D 80 / 150	693 - 825	825 - 945	945 - 1350	1350 - 1650	TSE 700	400 V	15.0 kVA	25 A	23.1 A	CEE 32	150 kg
D 80 / 160	740 - 880	880 - 1008	1008 - 1420	1420 - 1760	TSE 1000	400 V	16.0 kVA	32 A	24.6 A	CEE 32	160 kg
D 80 / 170	785 - 935	935 - 1071	1071 - 1530	1530 - 1870	TSE 1000	400 V	17.0 kVA	32 A	26.2 A	CEE 32	170 kg
D 80 / 180	832 - 990	990 - 1134	1134 - 1620	1620 - 1980	TSE 1000	400 V	18.0 kVA	32 A	27.7 A	CEE 32	180 kg
D 80 / 190	873 - 1045	1045 - 1197	1197 - 1710	1710 - 2090	TSE 1000	400 V	19.0 kVA	32 A	29.3 A	CEE 32	200 kg
D 80 / 200	924 - 1100	1100 - 1260	1260 - 1800	1800 - 2200	TSE 1000	400 V	20.0 kVA	32 A	30.8 A	CEE 32	200 kg

*ONLY with option IONIC MIXING

Housing type	Width	Height	Depth
TSE 175	300 mm	175 mm	210 mm
TSE 210	360 mm	210 mm	260 mm
TSE 460	515 mm	460 mm	385 mm
TSE 700	515 mm	700 mm	385 mm
TSE 1000	700 mm	1000 mm	500 mm



Triathlon Batterien GmbH

Siemensstraße 1
08371 Glauchau
Germany

Tel: +49 (0)3763/77 85-0
Fax: +49 (0)3763/77 85-110

E-Mail: info@triathlon-batterien.de
Internet: www.triathlon-batterien.de